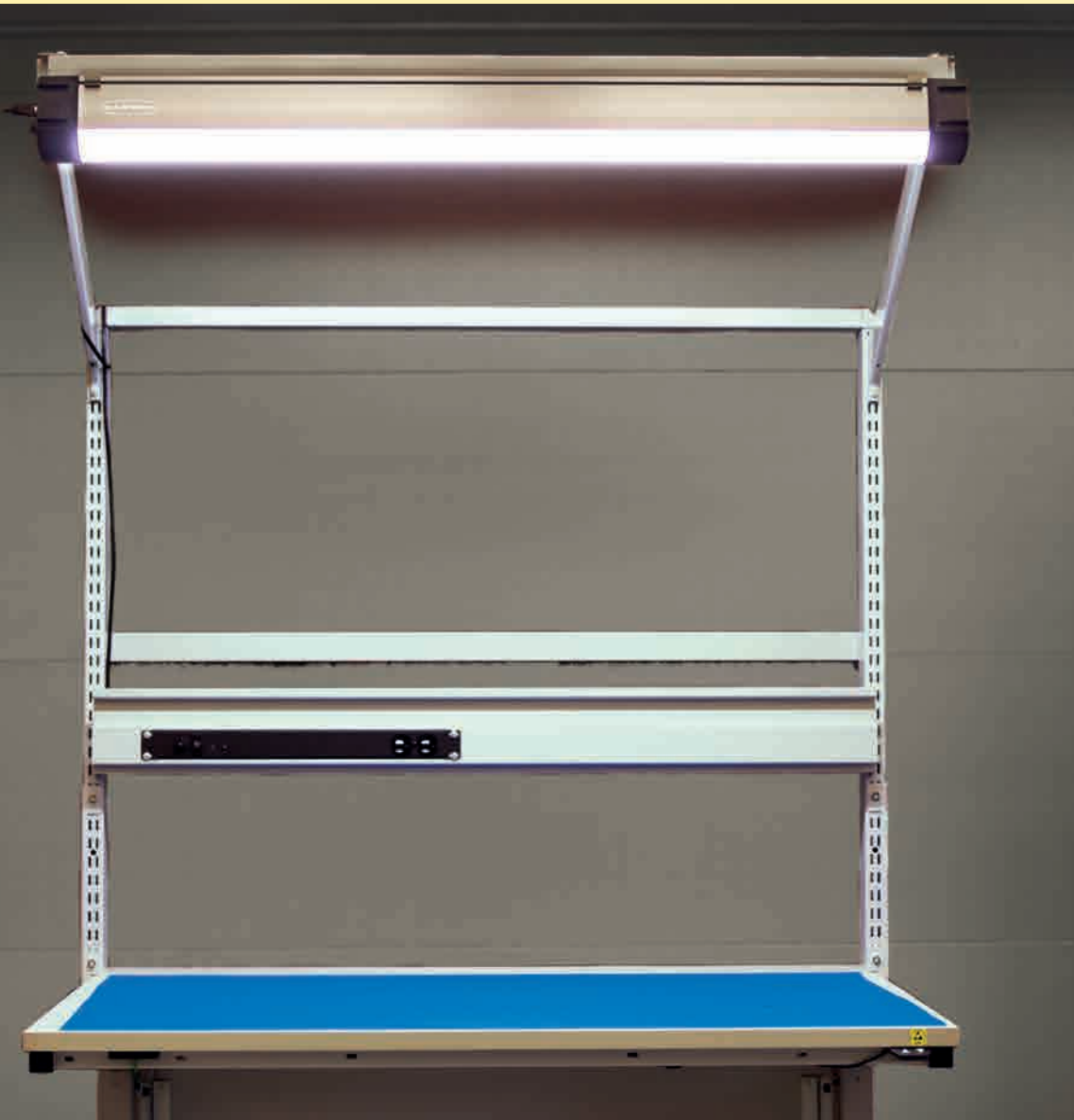


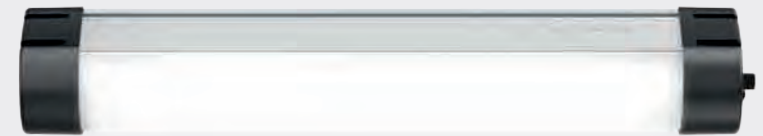
Workstation Illumination



WLB32



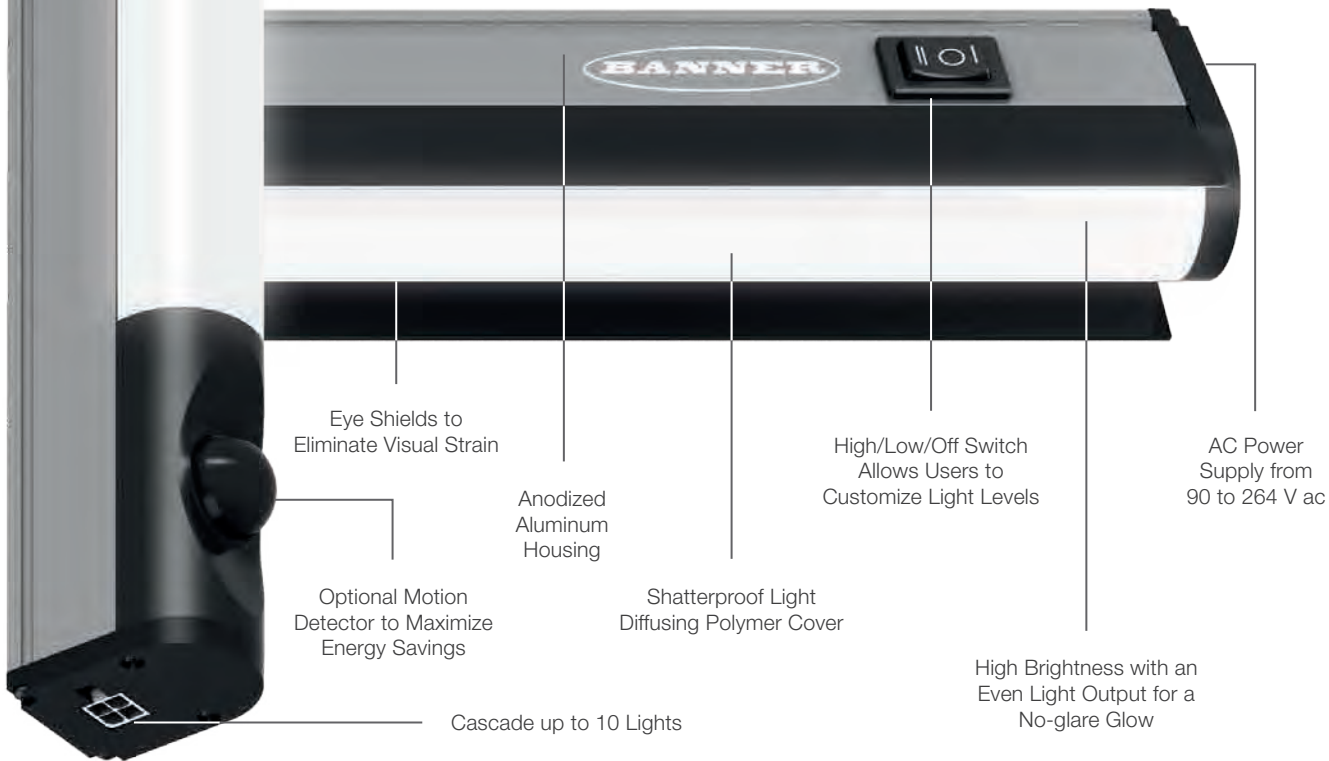
WLB92



more sensors, more solutions

WLB32 Industrial LED Light Bar

High brightness for localized illumination



Eye Shields to Eliminate Visual Strain

Anodized Aluminum Housing

High/Low/Off Switch Allows Users to Customize Light Levels

AC Power Supply from 90 to 264 V ac

Optional Motion Detector to Maximize Energy Savings

Shatterproof Light Diffusing Polymer Cover

High Brightness with an Even Light Output for a No-glare Glow

Cascade up to 10 Lights

WLB32 AC Models with Eye Shield and High/Low/Off Switch

Model	Length	Lumens
WLB32ZC285EPBQM	285 mm	650
WLB32ZC570EPBQM	570 mm	1300
WLB32ZC850EPBQM	850 mm	1950
WLB32ZC1130EPBQM	1130 mm	2600

Lux Levels on a Typical Workstation

Length	Distance	Max Lux
3' / 850 mm	3' / 0.9 m	612
3' / 850 mm	5' / 1.5 m	246
4' / 1130 mm	3' / 0.9 m	634
4' / 1130 mm	5' / 1.5 m	315

Note: Light bar centered on a 48" x 30" / 1219 mm x 762 mm workstation



AC Power Cordsets for WLB32 and WLB92, 6' (1.8 m) long – for Use with Models Using QM Connector

LQMAC-306	Flying Leads
LQMAC-306B	North & Central America, Japan, Taiwan
LQMAC-306D	India, Sri Lanka, Nepal, Namibia
LQMAC-306EF	Mainland Europe, South-Korea
LQMAC-306G	UK, Ireland, Cyprus, Malta, Malaysia, Singapore, Hong Kong, Vietnam
LQMAC-306I	Australia, New Zealand, Papua New Guinea, Argentina, China
LQMAC-306N	Brazil

Surface, Swivel, Snap and Magnetic Brackets



LMBWLB32



LMBWLB32-180S



LMBWLB32MAG



LMBWLB32U



LMBWLB32UT

WLB92 Industrial LED Light Bar

Brighter illumination at longer distances

WLB92 AC Models with Quick Disconnect and Integral Dimming Knob

Model	Length	Lumens
WLB92ZC550PBQM	550 mm	3130
WLB92ZC1100PBQM	1100 mm	6500

USA only: AC models are DLC certified, have a five year warranty and are rebate eligible.

Lux Levels on a Typical Workstation

Length	Distance	Max Lux
2' / 550 mm	5' / 1.5 m	455
2' / 550 mm	7' / 2.1 m	235
4' / 1100 mm	5' / 1.5 m	881
4' / 1100 mm	7' / 2.1 m	468

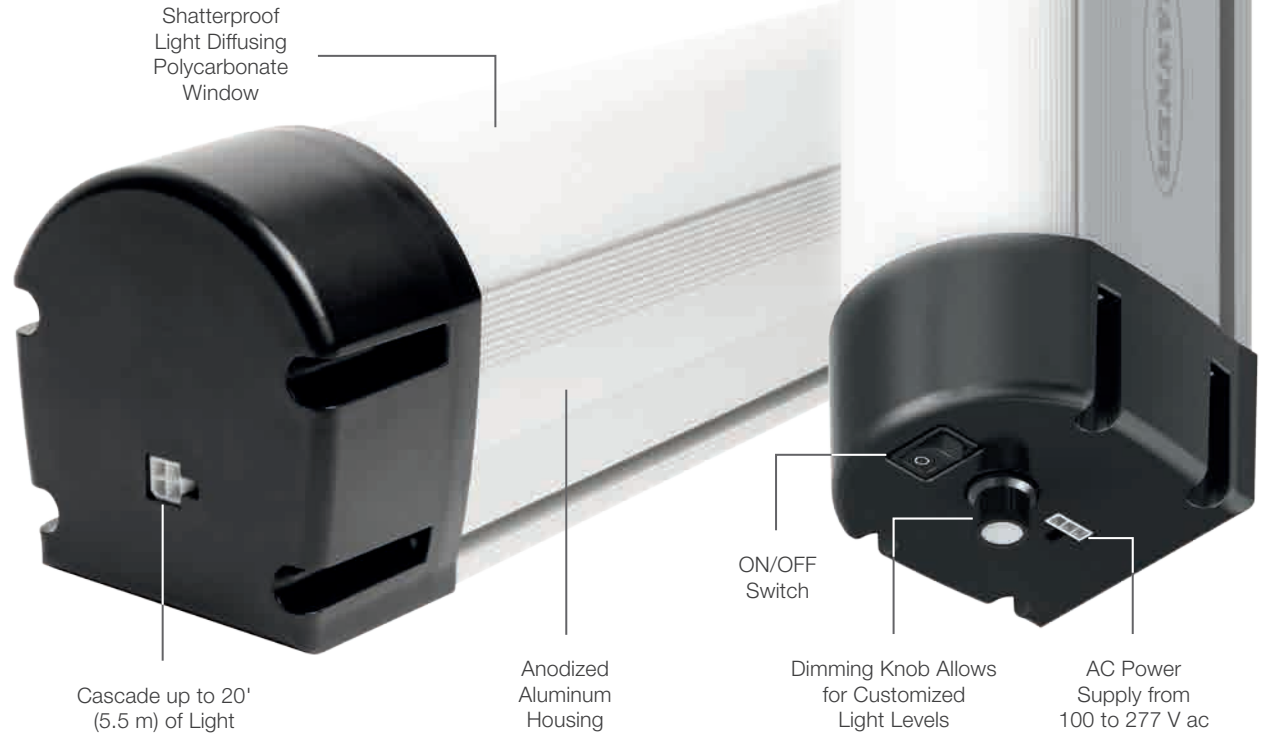
Note: Light bar centered on a 48" x 30" / 1219 mm x 762 mm workstation



Double-Ended Cascading Cordsets Male Straight/Male Straight Connectors

LQMAEC-3005SS	0.5' / 0.15 m
LQMAEC-301SS	1.0' / 0.31 m
LQMAEC-303SS	3.0' / 0.91 m
LQMAEC-306SS	6.0' / 1.83 m
LQMAEC-312SS	12.0' / 3.66 m
LQMAEC-320SS	20.0' / 6.10 m

DC models also available



Surface, Swivel, Snap and Hanging Brackets



LMBWL92



LMBWL92-CLIP



LMBWL92S



LMBWL92RAS



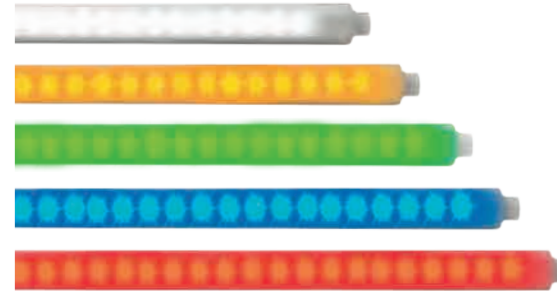
LMBWL92HK5

WL50-2 LED Work Lights



- Bright, focused light
- Low power consumption
- Flex arm in different lengths and mounting styles
- Integral ON/OFF switch
- Magnetic mounting

WLS27 LED Strip Lights



- Available in eight lengths from 145 to 1130 mm
- Compact 27 mm diameter fits neatly where needed
- Easy mounting with various bracket options
- Cascade multiple units
- Ideally suited for harsh environments with IP67 and IP69K sealing

Tower Lights



- Colored LEDs behind translucent windows eliminate false indication
- 50 mm preassembled IP67 units
- 70 mm modular units
- High brightness, daylight visible and audible alarm options
- Optional wireless base simplifies installation and adds monitoring capability

Illuminated Touch Buttons



- Simple operation with the touch of a finger, hand or palm
- Easily actuated with bare hands or gloves
- Up to three colors in a single unit with a variety of logic and I/O configurations
- Wireless models simplify installation and provide mobility