

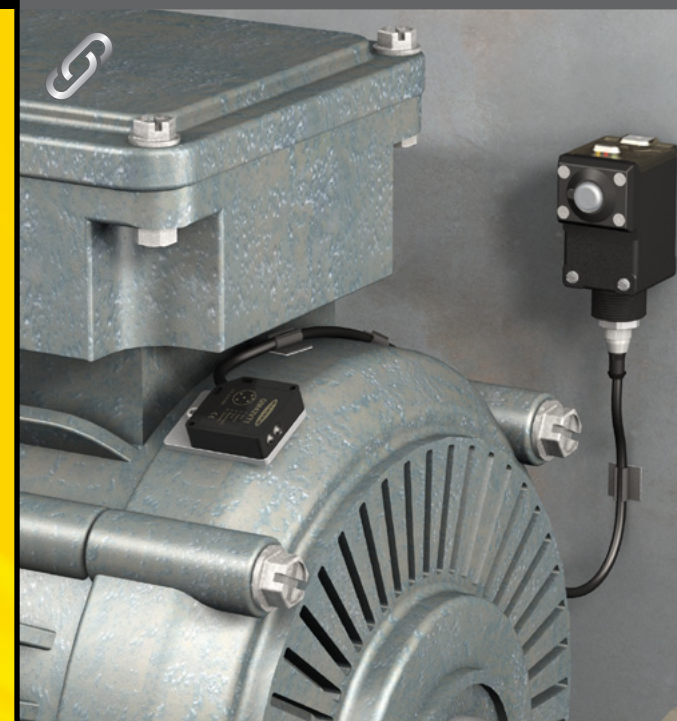
QM42VT1
Q45VT



Wireless Vibration and Temperature Monitoring

Vibration monitoring and **predictive maintenance** made easy with the full solution from Banner.

- Easily **monitor machine health** by sending info wirelessly to wherever you need it
- Avoid machine failures and delays by **detecting problems early**
- **Reduce downtime** and plan maintenance more efficiently
- Monitor a **variety of machines** to suit your needs
 - Motors
 - Pumps
 - Compressors
 - Fans
 - Blowers
 - Gear Boxes

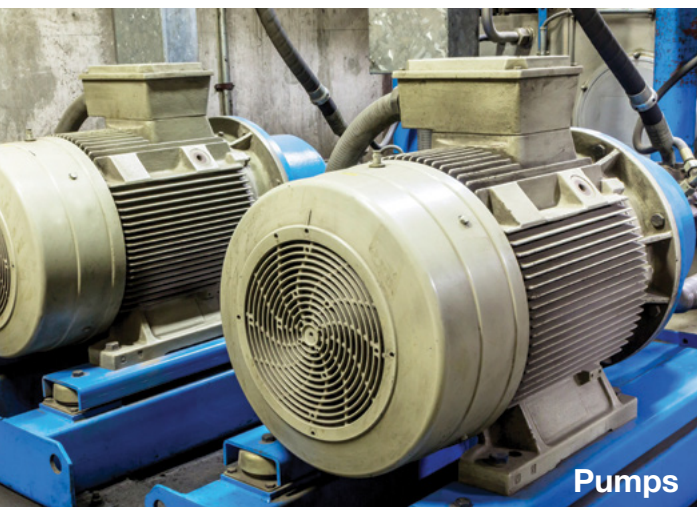




Motors



Fans



Pumps

Easy Installation of Wireless Remote Monitoring:

Monitor temperature and vibration with the QM42VT1 sensor.

- Predict failures
- Reduce down time
- Plan maintenance efficiently

3 meter cable with 5-pin Euro male connector
 • Connect to one wireless Node



Indicators

- Green: Power ON
- Amber: Serial Tx



Rugged IP67 zinc alloy housing
 • Withstands harsh environments

Select
Wireless

- Mount to motors, compressors, fans, pumps with a variety of options
- Wiring: Connect one QM42VT1 to one Node with 3 meter cable—5-pin Euro male connector
- Set vibration parameters according to ISO 10816 Vibration Severity Chart
- Set a temperature threshold up to 80°C
- Powered by one Node
- Provides local indication, sends signal to a central location and collects data via the Gateway

No Lengthy Cable Runs. No Power Needed.



Q45VT

Simple Monitoring: Typically 1 to 6 sensors/Nodes per Gateway*

Frequency:	2.4 GHz, Range
Power:	(2) 3.6 V AA lithium batteries
Topology:	Star
Display:	Indicator stable vibration temperature
Wiring:	5-pin Euro female connector
Configuration:	DIP switches

* More than six nodes is possible. Contact factory for assistance.

Monitor Many Sensors Over Long Distances:

Up to 47 sensors/Nodes per Gateway

Frequency:	2.4 GHz, Range 900 MHz, Range
Power:	(1) 3.6 V D-cell lithium battery
Topology:	Star
Display:	Six character LCD (registers values)
Wiring:	5-pin Euro female connector
Configuration:	Universal Configuration Tool license-free software



P6 Performance Node

Monitor Many Sensors Over Multiple Hops:

Up to 50+ sensors/Nodes per Master Radio

Frequency:	2.4 GHz, Range (+with additional slaves) + + ... 900 MHz, Range (+ with additional slaves) + + ...
Power:	(1) 3.6 V D-cell lithium battery
Topology:	Tree
Display:	Six character LCD
Wiring:	5-pin Euro female connector
Configuration:	Universal Configuration Tool license-free software



H6 MultiHop Slave

Select a Gateway



Select a Data Radio



QM42VT1 Wireless Vibration Sensor



Supply Voltage	3.6 to 5.5 V dc
Current	Active comms: 11.9 mA at 5.5 V dc
Indicators	Green flashing: Power ON Amber flicker: Serial Tx
Vibration	Mounted base resonance: 5.5 kHz nominal Measuring range: 0 – 65 mm/sec or 0 – 6.5 in/sec RMS Frequency Range: 10 – 1000 Hz Accuracy: $\pm 10\%$ @25°C
Temperature	Measuring range: -40 to +105°C (-40 to +221 °F) Resolution: 0.1 °C Accuracy: ± 3 °C
Environmental Rating	NEMA 6P, IEC IP67
Shock	400 g

Nodes

Models	Description	Frequency
DX80N2Q45VT	Q45 Vibration/ Temperature Node	2.4 GHz
DX80N9X1S-P6	1-wire Serial Performance Node	900 MHz
DX80N2X1S-P6		2.4 GHz
DX80DR9M-H6	1-wire Serial Modbus MultiHop Slave	900 MHz
DX80DR2M-H6		2.4 GHz



PM Gateways (10-30 V dc)

Models	Description	Frequency
DX80G9M6S-PM2	4 Discrete in, 4 Discrete out	900 MHz
DX80G2M6S-PM2	2 Analog in, 2 Analog out	2.4 GHz
DX80G9M6S-PM8	6 Discrete in, 6 Discrete out	900 MHz
DX80G2M6S-PM8		2.4 GHz

Gateway Pros (10-30 V dc)

DX80P9T6S-P	Modbus/TCP to EtherNet/IP Converter	900 MHz
DX80P2T6S-P		2.4 GHz
DX80P9A6S-P		900 MHz
DX80P2A6S-P		2.4 GHz

MultiHop Modbus (FlexPower*)

DX80DR9M-H	Serial interface: user selectable between RS-485 or RS-232	900 MHz
DX80DR2M-H		2.4 GHz

*FlexPower® power options allow for 10 – 30 V DC, solar, and battery power sources for low power applications

Accessories

Flexible Mounting Solutions to Suit Your Needs



[BWA-BK-002](#)



[BWA-BK-001](#) (magnet)



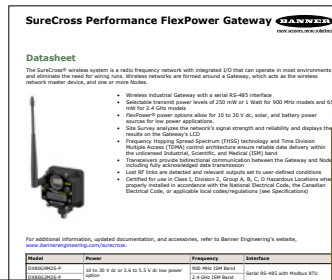
5-Pin Threaded M12/
Euro-Style Double-ended
Cordset
Female/Male straight connectors

DEE2R-51D
0.31 m (1')
DEE2R-53D
0.91 m (3')
DEE2R-58D
2.44 m (8')



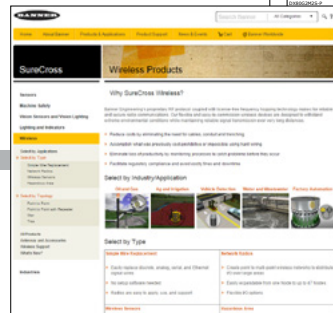
Wireless Vibration and Temperature Monitoring

Link to data sheets



Link to catalog

Link to the Banner website



Talk with an app engineer. Get product specs. Order now.

1-888-373-6767 • bannerengineering.com

minneapolis, mn

